

# Fully Automatic Coffee Machine OPERATION MANUAL



Model  
K90L

## The appliance and its parts



01

- |   |                         |   |                          |
|---|-------------------------|---|--------------------------|
| ① | Bean container lid      | ⑦ | Coffee powder lid        |
| ② | Water tank lid          | ⑧ | Grinder adjustment wheel |
| ③ | Water tank              | ⑨ | Bean container           |
| ④ | Drip tray lid           | ⑩ | Hot water spout          |
| ⑤ | Coffee ground container | ⑪ | Coffee spout             |
| ⑥ | Drip tray               | ⑫ | Power cord               |

## Controls and display



- ① Return button
- ② Menu/OK button
- ③ ESPRESSO button
- ④ AMERICANO button
- ⑤ HOT WATER button
- ⑥ On/Off button

- ⑦ Up button
- ⑧ Next button
- ⑨ CAPPUCINO button
- ⑩ COFFEE LATTE button
- ⑪ MACCHATO button

## Contents

The appliance and its parts	01
Controls and display	02
Safety instructions	04
Instructions for use	06
Safety Tips	06
Coffee machine model	06
Symbol description	06
Instructions for first time use	07
Power on	07
Grinding wheels adjustment	07
Power off	08
Making beverages	08
Making cappuccino	08
Making multiple cups	08
Program setting	09
Automatic water inlet mode setting	09
Cleaning and maintenance	10
Cleaning brewing unit	10
Rinsing milk unit	11
Descaling the coffee machine	12
Cleaning coffee grounds container and drip tray	14
Cleaning water tank	15
Cleaning bean container	15
Cleaning milk pipe	15
Failures handling	16
Transport and recycle	17
Emptying the unit	17
Technical data	18

## Safety instructions

Please read the operating instructions carefully before using the appliance and keep them for future reference.

Please see specification label on back of coffee machine and technical data is indicated in instruction manual

## Precautions

- Please do not touch heating parts of coffee machine to avoid scalding.  
Do avoid spillage on the connector. The coffee-maker shall not be placed in a cabinet when in use. Switch off the appliance and disconnect from supply before changing accessories or approaching parts that move in use  
Instructions for appliances connected to the water mains:  
max. inlet water pressure is 5 bar  
min. inlet water pressure is 1 bar
- Instructions concerning new and old hose-sets for appliances connected to the water mains by detachable hose-sets
- This appliance is intended to be used in household and similar applications such as:
  - a staff kitchen areas in shops, offices and other working environments
  - b farm houses
  - c by clients in hotels, motels and other residential type environments
  - d bed and breakfast type environments
- The instructions for all appliances include a warning to avoid spillage on the connector
- The appliances normally cleaned after use and must not to be immersed in water for cleaning.
- To avoid operator's injury caused by burn, electric shock or other unexpected reasons, please do not contact the power cord, plug, and main body with water.
- This appliance can be used by children aged from 8 years and above if they have been given supervision or instruction concerning use of the appliance in a safe way and if they understand the hazards involved. Cleaning and user maintenance shall not be made by children unless they are older than 8 and supervised. Keep the appliance and its cord out of reach of children aged less than 8 years. Children shall not play with the appliance.
- Appliances can be used by persons with reduced physical, sensory or mental capabilities or lack of experience and knowledge if they have been given supervision or instruction concerning use of the appliance in a safe way and understand the hazards involved.
- If the supply cord is damaged, it must be replaced by the manufacturer, its service agent or similar qualified persons in order to avoid a hazard.
- Unplug from outlet when stop using and before cleaning. Always disconnect the appliance from the supply before disassembling, assembling and cleaning the coffee machine.
- Use of parts that are not explicitly recommended would result in a fire of coffee machine, electric shock, or injury to persons.
- Please do not use the machine outdoor.
- Please do not hang up the power cord to the edges of the table, for it might be abased to an electric leakage, and cause injury to operators.
- Please place the machine in a fixed and stable workbench, and keep far away from high temperature (e.g. gas stoves, electric cookers, induction cookers, etc.).
- Power off the machine, until the cleaning program finished and no indication on screen, and then unplug the power.
- When using espresso, long coffee and hot water, liquid in high temperature will flow from coffee spout and hot water spout. Please do not touch it to avoid scalding.
- When using cappuccino, coffee latte, hot milk/cream, please confirm that the milk pipe has been connected from the milk frother to milk before making cappuccino, coffee latte, and hot milk/cream. Otherwise, high temperature steam may cause personal injury.



## Prohibitions

Except for cleaning and daily maintenance to coffee machine, if it fails to work please send it to authorized after-sale service center for repairing, or contact with customer service for after-sale services.

- Never immerse the machine into water, and do not put the machine near the water tap or water tank.
- Never disassemble coffee machine without authorization, for any maintenance needs disassembling the machine, please return it to Service Centre or contact after-sales service center.
- Never use an unmatched voltage to the electric specification of the machine; otherwise, the machine would be burnt.
- Only purified water in room temperature is allowed to be filled into the water tank. Never put warm water, hot water, milk or other liquid into it.
- Never carry or move the coffee machine while working. For moving or carrying the coffee machine, please switch it off and unplug the power cord firstly.
- The machine may release heat. Therefore, when placing the machine in the workbench, at least 3cm must be left against its surface, sides and wall side; at least 15cm must be left against its top. Prohibit placing the machine into a narrow space. As for dimension of the machine, please look at the Technical Data of User Manual (Page 18).
- Never use non-family usage detergent to wipe the machine, otherwise it may cause corrosion of coffee machine, and result in a risk of electric shock.
- Never use wet rag to wipe coffee machine, may result in a risk of electric shock.
- Never use hard edged tool or rough rag to clean the stain on the machine, it will damage the machine.
- Never put instant coffee powder or cocoa powder or other mixture powder into the bean container or powder container. It would cause coffee machine damaged.
- Never fill specially treated coffee bean ( e.g. cocoa, sugar coated ) into the bean container, it would cause coffee machine damaged.
- Only roasted coffee bean is allowed to put into the bean container. Rice, soybean, chocolate bean, nut, sugar, spice, etc., are prohibited. Otherwise it would cause coffee machine damaged.
- Never wash bean container or powder container with water, it will damage the machine.
- Never use coffee machine in the environment temperature below 0 °C. Water inside the machine will freeze and cause the coffee machine damaged.
- Never expose the machine in rainy, snowy, frosty environment. It would cause coffee machine damaged.



Damages due to above reasons are not covered under warranty.

## Operation

The coffee beans should be put at dry place and avoid sunlight. Otherwise wetting beans may cause damage to the grinding unit. Also it suggests that beans should not be left in bean container in case of leaving coffee machine unused for long time. Otherwise the beans may wet and cause blockage to grinder.

- Please make sure that the machine enters into "READY" status before other operation.
- The temperature of the hot water is high, Please do not touch it to avoid being scalded.
- Adjustable height of coffee spout: 100-160mm.

## Safety Tips

- Please notice the following tips to avoid personal injury from electric shock.
- Do not operate the coffee machine if the appliance or the power cord is damaged.
- When encountering breakdowns of the machine (if any burning smell or smoke), unplug the power cord immediately and contact with service center.
- When Coffee machine is unused for long periods, unplug the power cord and put it away, so that not to trip up people or damage to the power cord.
- Please don't use unoriginal parts, otherwise, it may cause the machine damaged.

## Coffee machine model

This manual only applies to K90 series.

## Symbol description

Non-compliance with the operation, may cause electric shock, and threat to life.



Non-compliance with the operation may cause Coffee machine damaged, or personal injury.



Non-compliance with the operation, may cause scalded or burn injury. This symbol, if prompted, please carefully read it.



This symbol, if prompted, represents recycle.



This symbol represents that do not fill the coffee beans to in the powder



container. Otherwise it will damage the machine.



## Instructions for first-time use

This chapter will help you understand the basic operations and settings for your first time use.

- As the machine has been tested at factory, there may be a little coffee powder left . We promise the machine is brand new.
- The coffee machine will start self-testing and cleaning at the first-time use, this helps the coffee machine achieve the best working condition, and this process cannot be skipped
- During the cleaning process, some hot water may flow out of the coffee spout into the drip tray.
- Please avoid contacting the spilling hot water.



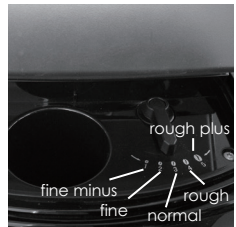
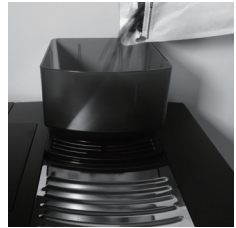
## Power on

- Step1: Only purified water at room temperature is allowed to fill in the water tank (The amount of water in the water tank cannot exceed the height of the MAX mark) .
- Step2: Fill beans into the bean container.
- Step3: Complete the power connection.
- Step4: Please turn on the power switch on the back of the coffee machine.
- Step5: Pressing power button to activate the appliance.



## Grinding wheel

- Please adjust the fineness of coffee bean powder according to the coffee beans.
- Please don't adjust the grinding wheel when the grinder is running, or the grinder will be damaged.
- During making coffee, if the coffee outflows very slowly or completely does not outflow, please set it to the rough mode 4 or 5.
- The rotary selector on the top of the appliance adjusts the degree of grinding from fine(mode 1) to coarse(mode5) as required. Factory setting is mode 3.
- If your coffee beans are in dark color, it is recommended to set to the rough mode 4 or 5.
- The adjustment of grinding wheel will be effective only after making two or more cups of coffee.





## Power off

After using milk or milk foaming, the Rinse Milk Unit function will be operated when power off.  
Remove the milk pipe from the milk box/container and insert to the hole of the drip tray grid according to the display.



## Making beverages

Take 'cappuccino' and 'Multi-cup/milk/cream' and for example to explain how to make coffee by touch icons.



- There may be some coffee powder for testing left in machine. Therefore do not drink the first cup of beverage and second one.
- You can use " ^ v " to select further options, such as the coffee strength and per-cup quantity. This setting won't be saved. You can press to cancel making beverage.



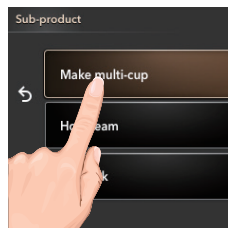
## Making cappuccino

Firmly connect the milk pipe with milk frother and milk box.  
Touch the 'cappuccino' icon for cappuccino function.  
When the screen displays 'enjoy', it means the cappuccino is ready, please enjoy it.



## Multi-cup/milk/cream

- Touch ' ^ v ' icon to select 'Multi-cup/milk/cream' function.
- Select the quantity of cups
- Select the beverage type.
- When the screen displays 'enjoy', it means the beverage is ready, please enjoy it.



## Program setting

Ensure the coffee machine shows "READY", press the "MENU/OK" button, then you can enter into the program Setting menu.

Setting content

Maintenance setting/Beverage setting/program setting/water supply Enter program setting, you can switch between the different setting options by pressing the arrow button "▲ ▼". Press "MENU/OK" for confirming settings and press button to exit the menu.



## Automatic water inlet mode setting

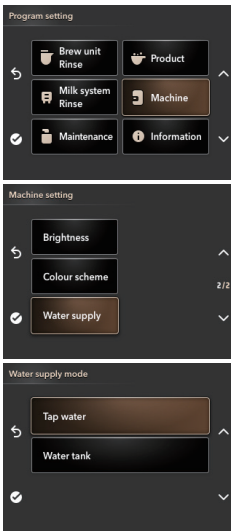
- The factory settings for water supply is water tank.

### Step1: water pipe connection

- Install the connector with 1/2 screw-thread side and 1/4 side on the connector of coffee machine.
- Connect the 1/4 water tube with coffee machine and purified water supply.



### Step2: program setting



Enter "Menu" and select "Machine" setting;

Enter " Water supply".

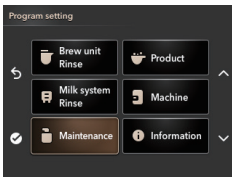
Select "Tap water" and press "MENU/OK"for confirming settings

## Cleaning and maintenance

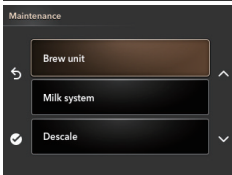
- This chapter will instruct you how to clean and maintain the coffee machine.
- Paying attention to daily maintenance of coffee machine, not only ensure the taste of each cup of coffee, but also extend the life of the coffee machine

### Cleaning brewing unit

- After a long-term use, there will be some coffee powder left on the brewing unit. Remove the powder by deeply cleaning brewing unit.
- Please use cleaning tablets to clean brewing unit. The process of cleaning brewing unit takes about 20 minutes.



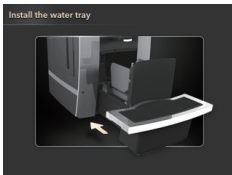
Enter the program settings, select the 'MAINTENANCE' option and confirm



Select 'tablet cleaning' and confirm.



Empty tray



Install tray



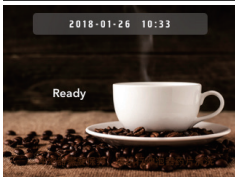
Open the coffee powder container lid, add the cleaning tablet. Close the coffee powder container lid and press "MENU/OK" for confirming.



Clean tray



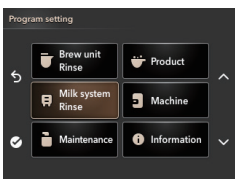
Install tray



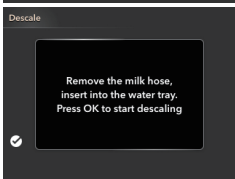
After cleaning finished, the machine enters into "READY" status.

## Cleaning the milk frother

- After a long-term use, some waste would be left in the Milk unit and need be cleaned.

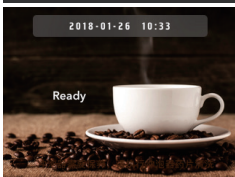


After entering the program settings, select the "milk frother cleaning" option.



Remove the milk pipe from the milk box/container and insert to the hole of the drip tray grid

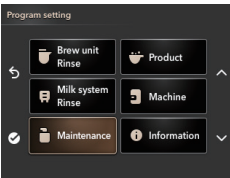
Press "MENU/OK" to start cleaning.



It will automatically return to "READY" status after cleaning.

## Descaling the coffee machine

- The daily usage will cause calcareous deposited in coffee machine. The depositing rate varies with the local water hardness.
- Decalcifier contains acidic substances that would stimulate your eyes and skin, so you must strictly comply with the security warnings noted by manufacturer on the packaging.
- If you have contacted it with your eyes or skin by accident, please wash it with clean water immediately.
- For cleaning and descaling only use the tablets intended for such from KALERM. They were specially developed for this fully automatic espresso machine. Otherwise it may cause damage to your coffee appliance.
- Dissolve the decalcifier in clean water, and then put the mixed liquid into the water tank. Fully dissolve the decalcifier can descale the coffee machine more thoroughly.
- The whole descaling process takes about 40 minutes.
- The termination during the descaling process will damage the coffee machine. So once you start the descaling process,
- Please do not terminate it midway.



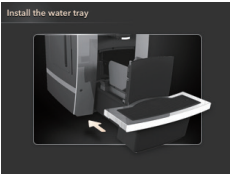
After a certain time use, if it reaches the degree of descaling, 'NEEDS DESCALE' and 'PRESS 'RINSE' will automatically display on the screen alternately.



After entering the program settings, select the " maintenance" option, select 'DESCALE' and press "MENU/OK" to start this program

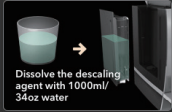


Empty tray



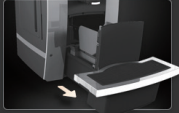
Install tray

Pour descaling agent into water tank



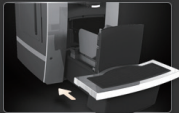
Take a bag of decalcifier and sufficiently dissolves it in clean water, then put this mixed liquid to the water tank, and reinstall the water tank to coffee machine

Empty drip tray



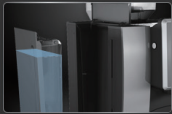
Empty tray

Install the water tray



Install tray

Rinse the water tank and fill water full



Take the water tank out, empty the rest water and clean it. Add purified water again, and reinstall it to the coffee machine

2018-01-26 10:33

Ready



When the screen shows "READY", it indicates the descaling is completed; Now, you can continue to make coffee.

## Cleaning coffee grounds container and drip tray

- Do not use chemical solvents and erosive cleaner or alcohol to clean the coffee grounds container and drip tray.
- The drip tray and coffee grounds container cannot be cleaned in dishwasher
- Do not use metal objects to clean dirt or coffee precipitate to avoid scraping the drip tray and coffee grounds container.
- When prompted to clean the coffee grounds, coffee grounds must be cleaned up, or it will cause the machine damaged.



When it cumulates to 35 cups, it will automatically indicate "EMPTY GROUNDS". Please remove coffee grounds of the drip tray and coffee grounds container. Then reinstall the drip tray to the coffee machine after 3 seconds.



If the drip tray is full, the machine will automatically indicate "EMPTY TRAY". Take out the water drip tray and pour the waste.



14

Water and clean the Sheet metal. Then reinstall the drip tray to the coffee machine after 3 seconds.



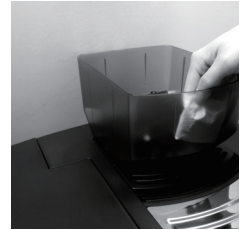
## Cleaning water tank

- Suggested that, each time adding water, clean the tank thoroughly with running water first.
- Because the water tank is made from food-grade and environmental materials, it might be friable to crack. Please gently pick it up and put it down, and never let it fall down. If the water tank damaged, please contact with customer service center.



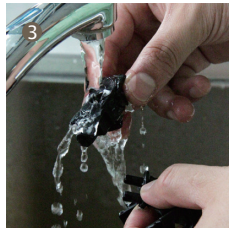
## Cleaning bean container

- Please use a dry rag or a paper towel to clean the residuary grease in the bean container.
- Because the bean container cover is made from food-grade and environmental materials, it might be friable to crack. Please gently pick it up and put it down, and never let it fall down. If the bean container lid damaged, please contact with customer service center.



## Disassemble and clean milk frother

- In order to keep milk pipe clean, please clean it every day.
1. Take off milk frother carefully.
  2. Disassemble the milk frother.
  3. Clean milk pipe in running water.
  4. Assemble the milk frother and install it on the coffee machine.





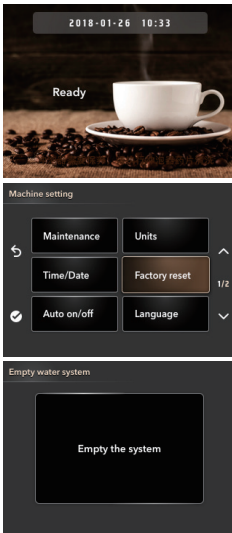
## Failures handling

Display	Cause	Solution
EMPTY TRAY	If the water drip tray is full, any function of making beverage will be out of service.	Take the drip tray out, empty the waste water in the drip tray and reinstall it to the machine.
EMPTY GROUNDS	EMPTY GROUNDS, If the coffee grounds container is full, any function of making beverage will be out of service.	Take the coffee grounds container out, empty the coffee grounds container and reinstall it.
FILL WATER TANK	If water in the water tank is used up, any function of making beverage will be out of service.	Fill the water tank with water.
FILL BEANS	If coffee beans in the bean container are used up, function of making coffee will be out of service.	Add beans into bean container
INSTALL TRAY	The drip tray is not installed correctly; any function is out of service.	Install the drip tray correctly.
UNIT EMPTY	The water in the pipe inside the machine is not enough; any function is out of service.	press "MENU/OK" to confirm.
Error code 1~7	The coffee machine failures, may not be able to be used.	1. Power off, restarting up ; 2. If still unresolved, please pull out the plug. Contact with customer service center.
PRESSURE HIGH	1. Using dark roasted coffee beans or over fine coffee powder; 2. The filter of the brewer is clogged.	1. Adjust grinder wheel to rougher; 2. Start brewer cleaning procedure
Brew unit error	Internal parts malfunction	Restart coffee machine

## Transport and recycle

### Transport

- Please save the packaging of the coffee machine for future transportation.
- Make sure to empty water inside the machine before transportation, otherwise, it will damage the machine
- After emptying the waterway, please wipe the machine both inside and outside to dry.
- Once the empty waterway program was executed, the system will rerun to the program of "first-time use", when the coffee machine is used again.
- While emptying the waterway, there will be a high-temperature steam sprays from coffee spout. Please pay special attention to avoid being scalded.
- Please empty the water system in "water tank" mode.



The machine is on the status of "READY".

Enter program setting and 'Machine' and select 'Factory reset'.

Display "EMPTY UNIT" and confirm. Turn off the water supply or remove water tank, then machine begins to clean up the waterway automatically. After emptying the waterway, the machine will automatically power off. Take the drip tray out after the power is switched off, and clean the water in the drip tray.

### Recycle

- When recycling the machine, some inner parts can be recycled to use again. Please pay attention to recycle them for environmental protection.

## Technical Data

Voltage/Frequency	220~240 V/ 50~60 Hz
Power	2700 W
Pump pressure	19 bar
Capacity of water tank	6 L
Capacity of bean container	1000 g
Capacity of coffee grounds container	30-35 pieces
Adjusting height of coffee spout	100 - 160 mm
Length of power cord	1.8 m
Net weight	18.5 kg
Dimensions (Length× Width ×Height)	511mm*403mm*582mm

